

Minoh City Hazard Zone Map

About this map

- Areas prone to flooding**
This map shows flood zones which are set according to an estimated flood zone of a one in 200 year heavy rainfall that would result in the flooding of the Senni River, Minoh River, Yono River, Katsugawa River, Minoh River and branch rivers. It also shows the extent to which they are dangerous.
- Areas prone to landslides**
Based on topographical data and past data to show which areas (close to houses and roads) are dangerous. Shows steep areas with inclines over 30 degrees and over 5 meters tall where there is a danger of rock avalanches and cliff collapse.
- Evacuation Centers**
Shows where the evacuation centers are (your evacuation center is the elementary school in your school district). *Note: Some evacuation centers are not open during school hours.
*If there are areas that you feel are dangerous that aren't marked on this map, write them down on your copy.
*Along with your family confirm a route to an evacuation center, then actually try walking the route in order to make sure that it is safe.

EMERGENCY NUMBER TO CALL IN THE CASE OF A DISASTER

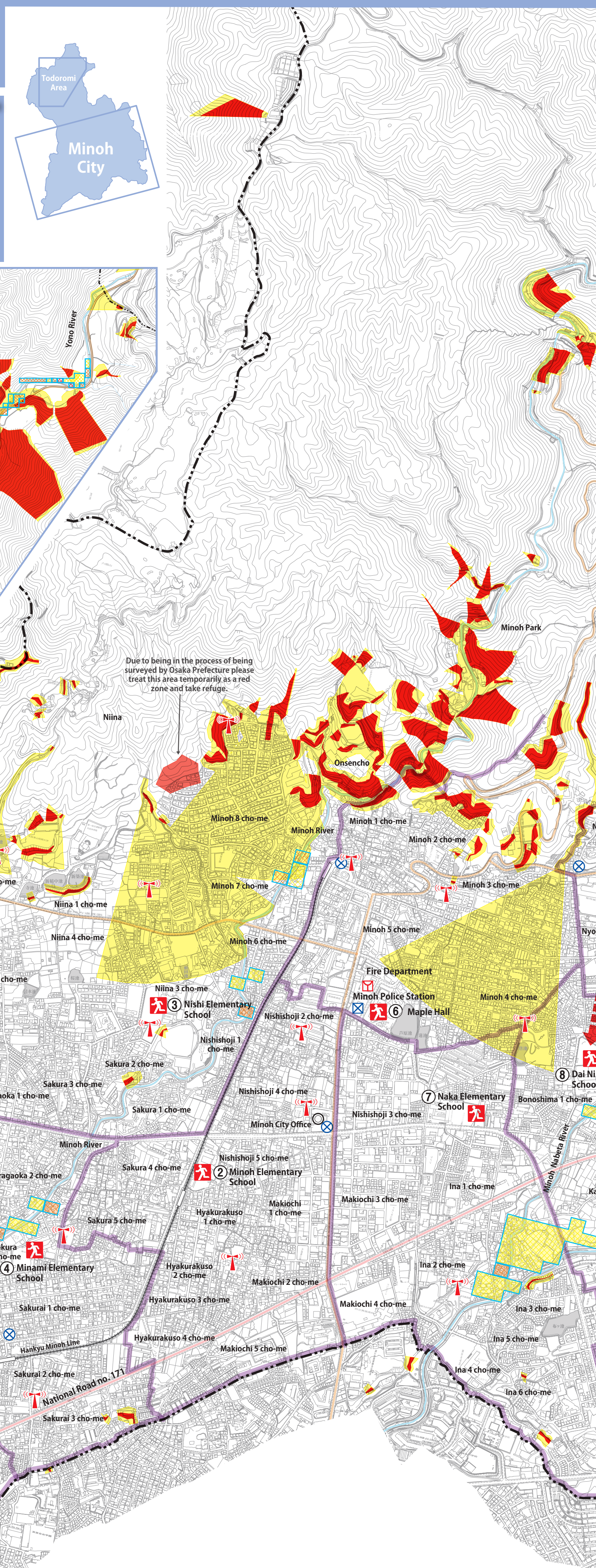
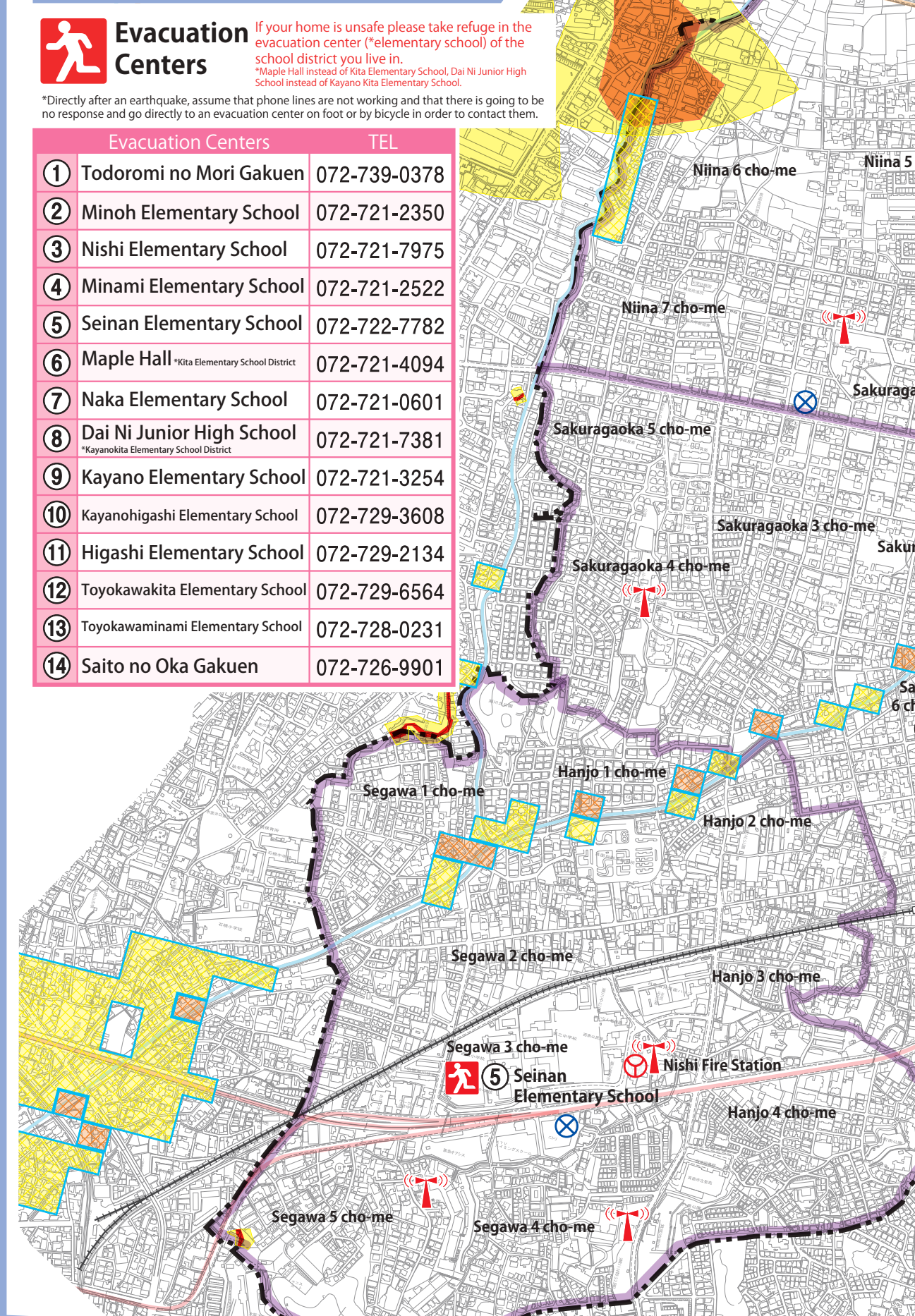
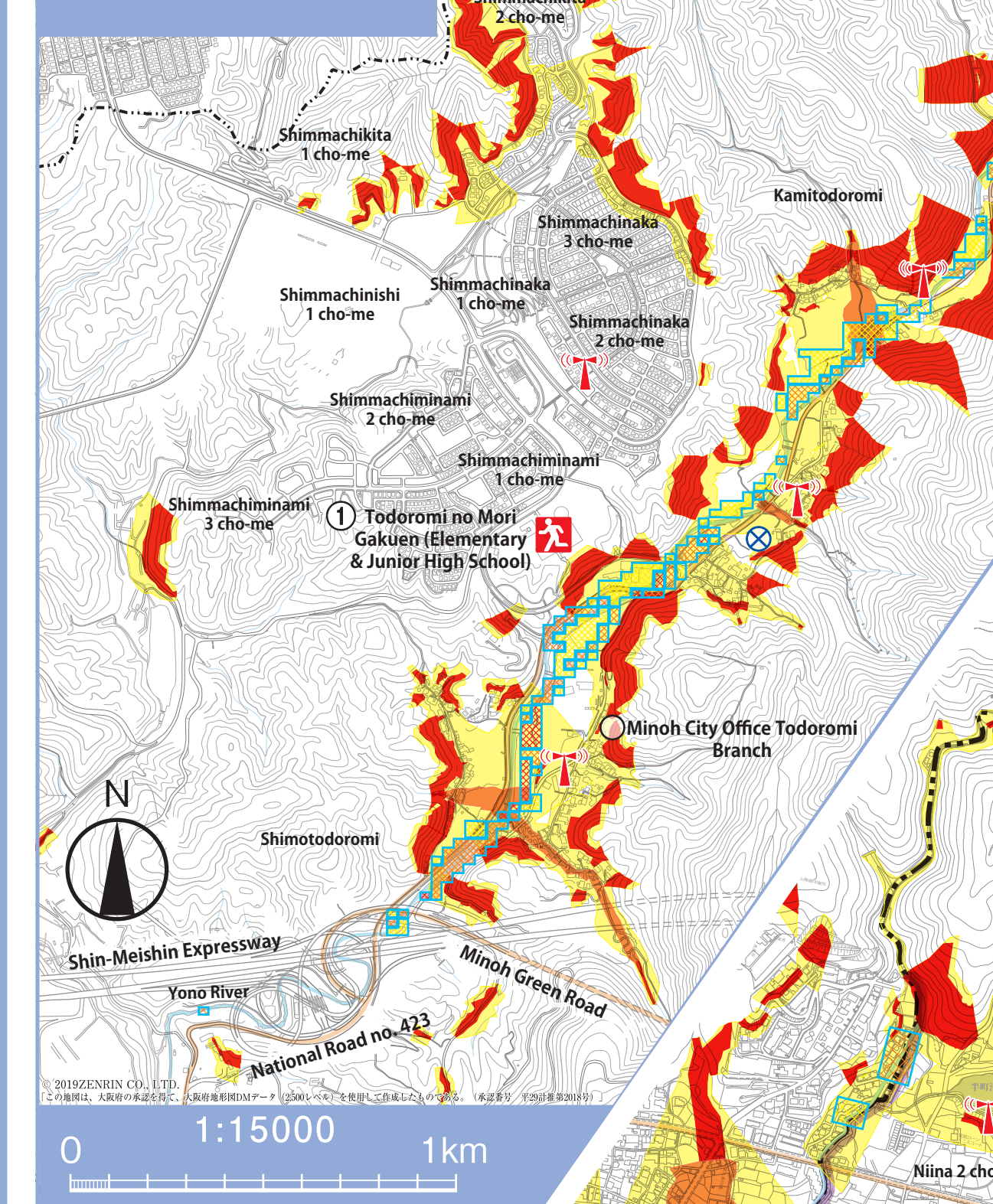
Minoh City Disaster Response Headquarters (direct line)
072-724-5000

For those who are deaf or hard of hearing (or have a speech impediment):
FAX 072-727-3539 (Health and Welfare Department)

If this happens:
City gas leak (Osaka Gas) 0120-5-19424
Propane gas leak (Emergency Center) 06-6261-0099
Fallen power lines (Kansai Electric Power Company) 0800-777-8810

If the phone call won't connect or no one picks up:
Go directly to an evacuation center (elementary school) close to you. (You can contact the Disaster Response Headquarters on a handheld radio etc.)

Todoromi & Shimmachi Area



Typhoons & sudden heavy rain

Which is safer for your home?

Is it safer to go to an evacuation center?

Which is best for me?

It is safer to stay home?

Your evacuation actions

Evacuate to an evacuation center

Go to an evacuation center

Before it gets dark

Before the storm strikes

Stay safe at home (on the 2nd floor or above)

Do not go outside, go into a room facing away from mountains, cliffs and rivers on the 2nd floor or above.

*Hazardously do not go outside in heavy wind and rain.

Stay safe at home

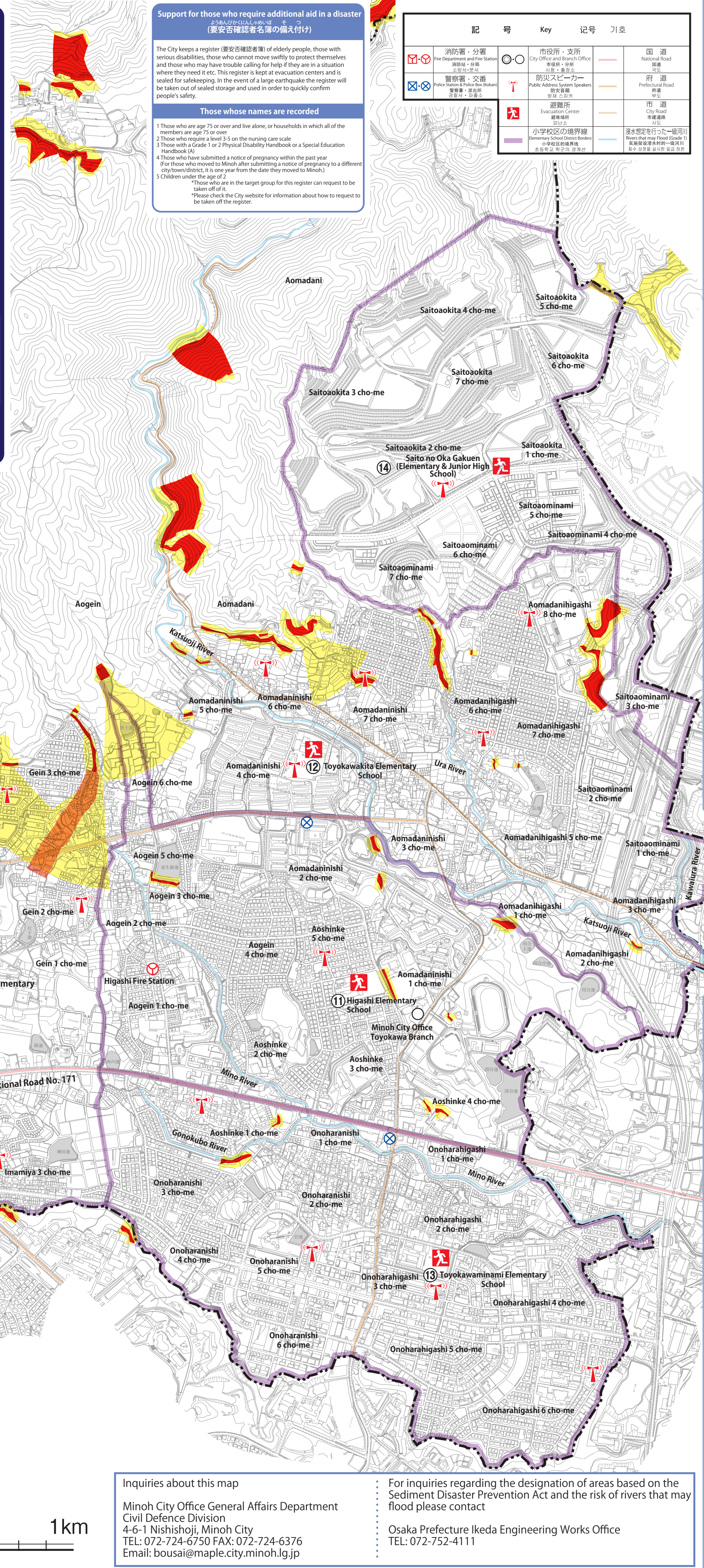
Do not go outside, go into a room facing away from mountains, cliffs and rivers on the 2nd floor or above.

*Hazardously do not go outside in heavy wind and rain.

What to do when the City makes evacuation announcements

If an evacuation preparation (evacuation of elderly people and others) is announced, households in the areas asked to evacuate should:

- Households with elderly people, people with disabilities and small children etc. should immediately begin evacuating to an evacuation center.
- Those who can evacuate in the standard manner should begin to prepare to evacuate. (Start when an evacuation advisory is announced.)



Support for those who require additional aid in a disaster

お年寄りがいる世帯への配慮 (要安否確認者名簿の備え付け)

The City keeps a register (要安否確認者) of elderly people, those with serious disabilities, those who cannot move swiftly to protect themselves and those who may have trouble calling for help if they are in a situation where they need it etc. This register is kept at evacuation centers and is sealed for safekeeping. In the event of a large earthquake the register will be taken out of sealed storage and used in order to quickly confirm people's safety.

Those whose names are recorded

- Those who are age 75 or over and live alone, or households in which all of the members are age 75 or over.
- Those who require a level 3 or 4 on the nursing care scale.
- Those with a Grade 1 or 2 Physical Disability Handbook or a Special Education Handbook (A).
- Those who have submitted a notice of pregnancy within the past year (For those who moved to Minoh after submitting a notice of pregnancy to a different city/town/district, it is one year from the date they moved to Minoh).
- Children under the age of 2.

*Those who are in the target group for this register can request to be taken off it.

*Please check the City website for information about how to request to be taken off the register.

Key

| 記号 | Key | 記号 | 記号 |
|--------|--------|----|----|
| 消防署・分署 | 市役所・支所 | 国道 | |
| 消防団 | 市役所・支所 | 府道 | |
| 警察署 | 市役所・支所 | 市道 | |
| 警察署・交番 | 市役所・支所 | 市道 | |
| 警察署・交番 | 市役所・支所 | 市道 | |
| 警察署・交番 | 市役所・支所 | 市道 | |

Inquiries about this map
Minoh City Office General Affairs Department
Civil Defence Division
4-6-1 Nishishoji, Minoh City
TEL: 072-724-6750 FAX: 072-724-6376
Email: bousai@maple.city.minoh.lg.jp

For inquiries regarding the designation of areas based on the
Sediment Disaster Prevention Act and the risk of rivers that may
flood please contact
Osaka Prefecture Ikeda Engineering Works Office
TEL: 072-752-4111