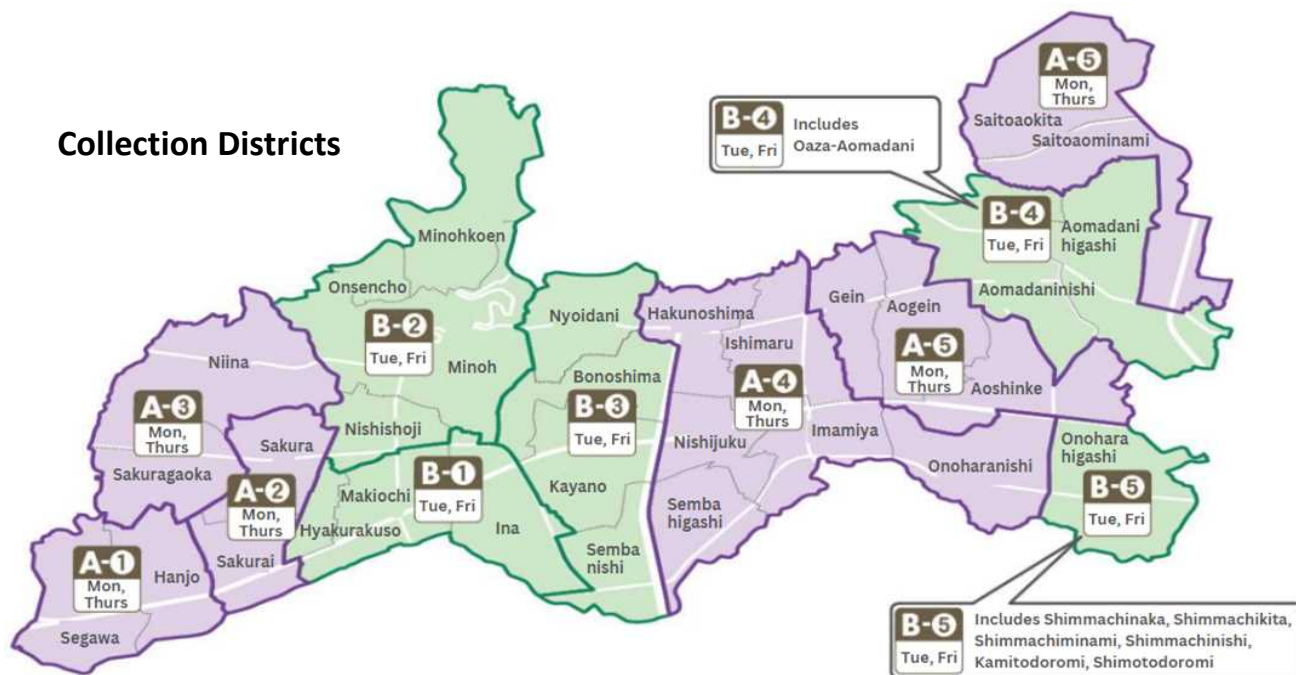


# Minoh City Household Garbage Guide

## Collection Districts



## Collection Schedule

PET bottles, unburnable garbage, dangerous garbage, and oversized garbage are collected on the same day

District	Burnable garbage	Empty cans, bottles	PET bottles, unburnable, dangerous, oversized garbage
<b>A Monday, Thursday collection</b>			
Segawa, Hanjo	Monday, Thursday every week	1st, 3rd Wednesday of the month	<b>A-1</b> 1st, 3rd Tuesday
Sakurai, Sakura			<b>A-2</b> 1st, 3rd Friday
Sakuragaoka, Niina			<b>A-3</b> 2nd, 4th Tuesday
Hakunoshima, Ishimaru, Nishijuku, Imamiya, Sembahigashi, Onoharanishi			<b>A-4</b> 2nd, 4th Wednesday
Gein, Aogein, Aoshinke, Saitoaokita, Saitoaominami			<b>A-5</b> 2nd, 4th Friday
<b>B Tuesday, Friday collection</b>			
Hyakurakuso, Makiochi, Ina	Tuesday, Friday every week	2nd, 4th Wednesday of the month	<b>B-1</b> 1st, 3rd Monday
Minoh, Minohkoen, Onsencho, Nishishoji			<b>B-2</b> 1st, 3rd Wednesday
Nyoidani, Bonoshima, Kayano, Sembanishi			<b>B-3</b> 1st, 3rd Thursday
Aomadani, Aomadanihigashi, Oaza-Aomadani			<b>B-4</b> 2nd, 4th Monday
Onoharahigashi, Shimmachinaka, Shimmachikita, Shimmachiminami, Shimmachinishi, Kamitodoromi, Shimotodoromi			<b>B-5</b> 2nd, 4th Thursday

## Inquiries

### ◆ Putting out garbage, garbage collection

Waste Management Division	TEL	072-729-2371
	FAX	072-729-7337
Open	Monday - Friday 8:45 a.m. - 5:15 p.m. (includes public holidays) (closed during the New Year period)	

### ◆ Taking garbage to a disposal center

Environmental Clean Center	TEL	072-729-4280
	FAX	072-728-3156
Taking in garbage	Monday - Saturday (includes public holidays) 9:00 a.m. - 12:00 p.m. 1:00 p.m. - 5:00 p.m. (closed during the New Year period)	
Open	Monday - Friday 8:45 a.m. - 5:15 p.m. (includes public holidays)	

Please note: Inquiries and taking in garbage have different open times and days.

### ◆ General licensed garbage collection and transportation companies

Private companies licensed by Minoh City to collect and transport garbage. (Japanese alphabet order)	
1 Kinki Seibi	TEL: 072-723-3226
2 Koushin Shouji	TEL: 072-729-8755
3 Shurou Life	TEL: 072-729-1011
4 Masuda Esei	TEL: 072-728-3980
Minoh City Environmental Services Limited Liability Partnership	TEL: 072-728-0477 (10:00 a.m. - 4:00 p.m.)

The collection schedule is different during the New Year period. Please check the Minoh City "Momiji Dayori" magazine or the Minoh City website for details.

## Burnable Garbage (2 times every week) (moeru gomi)

\* Put out garbage before **9:00 a.m.**

### ● Items made of burnable materials go into Minoh City designated burnable garbage bags

Examples: Food waste, items made of paper, plastic, fabric, leather, wood, rubber, etc.

If you lower your garbage amount (by draining liquids, breaking large items into small pieces, etc.), the designated free burnable garbage bags should cover your needs.

**FREE DISPOSAL**

### Example items



\* Plastic, vinyl etc. is also burnable garbage.

\* If there is any metal, glass, or ceramics, this is unburnable garbage.

### How to put the garbage out

- Put your garbage in a Minoh City designated burnable garbage bag.
- Tie the bag in a cross shaped knot, and make sure it is closed tightly.
- There is no limit for the amount of burnable garbage you can put out on collection day. However, if you have a lot more garbage than normal (from moving, cleaning, an event, etc.), please apply for "Special Collection".

### ● Grass, leaves, branches, etc.

【① Grass, leaves, small branches, etc.】

Put out in any clear plastic bag up to size 40 L (make sure the bag is closed tightly).



Do not mix with other garbage

【② Wood, branches, tree stumps, bamboo, vines, etc.】

Cut into pieces smaller than 7 cm diameter x 50 cm length, then tie up together in a way that is easy to carry (please use a string made of burnable materials).

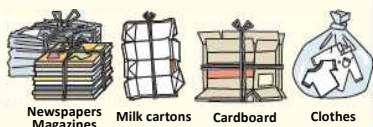
Tie up together



- \* You can put out up to a total of 10 lots (of ① bags and/or ② tied piles) per collection day
- \* You can also put this garbage into Minoh City designated burnable garbage bags

### ● Newspapers, magazines, cardboard, etc.

For newspapers, magazines, cardboard, etc., please put them out at the scheduled local collection or City Caravan collection areas



These can be put out as burnable garbage, but please consider recycling. This is to burn less garbage, and to promote the work of local recycling organizations.

**We ask for your help with recycling.**

### Minoh City Designated Burnable Garbage Bags

- If you run out of free burnable garbage bags, you can buy more bags. (If you are not registered as a Minoh City citizen, you must pay for all bags)
- You can buy burnable garbage bags at any Minoh City designated garbage bag distributor.

【Price of burnable garbage bags for sale】

Size	Amount	Price
20 L	10 bags	¥418
30 L	10 bags	¥628
40 L	10 bags	¥836

## Unburnable Garbage (2 times every month) (moenai gomi)

\* Put out garbage before **9:00 a.m.**

- Items with parts made of metal, glass, or ceramics go into Minoh City designated unburnable garbage bags

**Ceramic, glass, metal items, lightbulbs, empty bottles not used for food (e.g. cosmetic bottles), large empty cans (e.g. snack tins)**

### Example items



Broken pots and pans



Cosmetic bottles



Umbrellas



AV (Audiovisual) equipment



Sharp items

### How to put the garbage out

- Put your garbage in a Minoh City designated unburnable garbage bag (up to **2 bags** per collection day). (Garbage will not be collected if it sticks out of the bag. Please fold, bend, or break up garbage to fit in the bag.)
- Tie the bag in a cross shaped knot, and make sure it is closed tightly.
- Wrap glass/sharp items in paper before you put them into a bag, and please circle the word "危険物" (dangerous goods) on the bag.

#### ● Items that are not "Unburnable Garbage":

- Items under the Act on Recycling of Specified Home Appliances (see "Items under the Act..." on page 8 for details)
- Recyclable computers (see "Computers" on page 9 for details)
- Items that are hard to process (see "Items Hard to Process" on page 10 for details)
- Items that are not allowed to be thrown out (see "Garbage not allowed" on page 10 for details)

#### Garbage that is hard to process:

- To ask for collection, please contact the Waste Management Division (TEL: 072-729-2371).
- Spring mattresses (1), vehicle parts (2)
- Soil/sand, concrete blocks, bricks (up to 20 L each)
- Items longer than 3 m (but must be able to carry by hand)
- \* (1) Special collection costs ¥3,340 each for spring mattresses (special hard to process item).
- \* (2) Tires (and included wheel parts) are not allowed to be thrown out. The City cannot collect these, so please contact the store/dealer/manufacturer they were bought from for assistance.

### Minoh City Designated Unburnable Garbage Bags

#### 【You must pay for unburnable garbage bags】

- You can buy unburnable garbage bags at any Minoh City designated garbage bag distributor.

【Price of unburnable garbage bags for sale】

Size	Amount	Price
20 L	5 bags	¥524
30 L	5 bags	¥786

### Please apply for "Special Collection" in these situations (fees apply)

- Please see "Special Collection" on page 7 for details.
- If you have a lot more garbage than normal (from moving, cleaning, an event, etc.).
- If you have items that are hard to process (see "Items Hard to Process" on page 10 for details).
- If you have garbage that is over the collection amount limit.

## Oversized Garbage (2 times every month) (sodai gomi)

\* Put out garbage before **9:00 a.m.**

- Items that do not fit into Minoh City designated bags (up to 3 m long, can be carried by hand)

Desks, stoves, drawers, chairs, heaters, microwaves, futon mattresses, bicycles, etc.

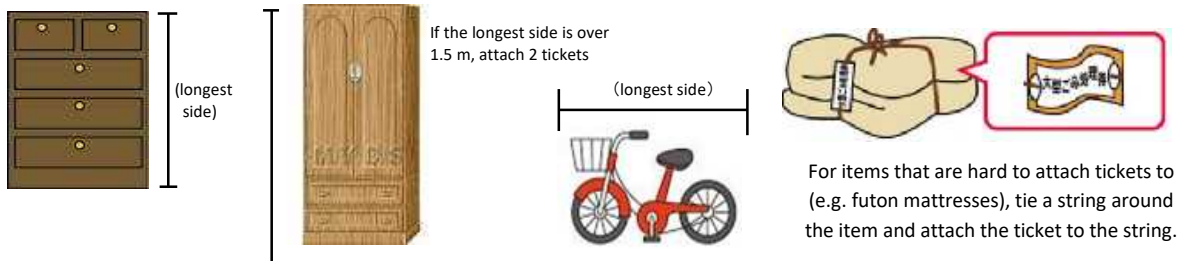
### Example items



### How to put the garbage out

- Attach an oversized garbage ticket to each item.
- You can only put out 1 item per collection day.

The length (of the longest side) is:	1.5 m (150 cm) and under = 1 oversized garbage ticket
	Over 1.5 m (150 cm) up to 3 m (300 cm) = 2 oversized garbage tickets



- For stoves, gas heaters, and gas fan heaters, make sure to empty any oil (kerosene) and remove any batteries. (otherwise it could cause an explosion, so be sure to follow these instructions)

### ● Items that are not "Oversized Garbage":

- Items under the Act on Recycling of Specified Home Appliances (see "Items under the Act..." on page 8 for details)
- Recyclable computers (see "Computers" on page 9 for details)
- Items that are hard to process (see "Items Hard to Process" on page 10 for details)
- Items that are not allowed to be thrown out (see "Garbage not allowed" on page 10 for details)

### Garbage that are "Items Hard to Process":

- To ask for collection, please contact the Waste Management Division (TEL: 072-729-2371).
- Spring mattresses (1), vehicle parts (2), soil/sand, concrete blocks, bricks (up to 20 L each)
- Items longer than 3 m (must be able to carry by hand)
- \* (1) Special collection costs ¥3,340 each for spring mattresses (special hard to process item)
- \* (2) Tires (and included wheel parts) are not allowed to be thrown out. The City cannot collect these, so please contact the store/dealer/manufacturer they were bought from for assistance.

### Oversized Garbage Tickets

- You must pay for oversized garbage tickets.
- You can buy oversized garbage tickets at any Minoh City designated garbage bag distributor.
- Please put the ticket in a place where the collection worker can easily see it.
- Please keep the other half of the ticket until the item has been collected.
- Tickets cannot be refunded, or be replaced if damaged/lost.

Oversized  
Garbage  
Ticket  
¥314 each  
(including tax)

### Please apply for special collection in these situations (fees apply)

- Please see "Special Collection" on page 7 for details
- If you have a lot more garbage than normal (from moving, cleaning, an event, etc.)
- If you have items that are hard to process (see "Items Hard to Process" on page 10 for details)
- If you have garbage that is over the collection amount limit



**Dangerous Garbage** (2 times every month)  
(kiken gomi)

\* Put out garbage before **9:00 a.m.**

Fluorescent lights, batteries, thermometers or blood pressure monitors (that contain mercury), lighters, gas canisters/spray cans

**Example items**



\* Electronic thermometers are unburnable garbage.

**How to put the garbage out**

**Fluorescent lights**



Wrap in newspaper or the original packaging so it doesn't break

**Batteries, thermometers**



Put in a clear bag

**Lighters**



Put in a clear bag

**Gas canisters/spray cans**



Put directly into a collection basket

DO NOT put in the same bag

DO NOT put in a collection basket

\* DO NOT put in the same collection basket as PET bottles

Spray cans that were cut open have caused fires around the country. In Minoh City, spray cans can be collected without being cut open (even if there is content left inside).

**DO NOT put spray cans in a bag!**



DO NOT cut open!

It's OK even if you don't use it all



Put AS IT IS directly into a collection basket!



If you put gas canisters/spray cans into a garbage bag with other garbage, the garbage collection workers won't know it is inside. If this goes into the garbage truck, it can cause the truck to set on fire. Do NOT put gas canisters/spray cans in a bag. Just put them directly into a collection basket.



## PET Bottles (2 times every month)

\* Put out garbage before **9:00 a.m.**

- Items with the "PET Bottle Identification Mark" under the Act on the Promotion of Effective Utilization of Resources

### PET bottles with the PET bottle recycle mark



Plastic bottles  
(for drinks, sauces, etc.)  
with this mark

### Example items



Bottled drinks



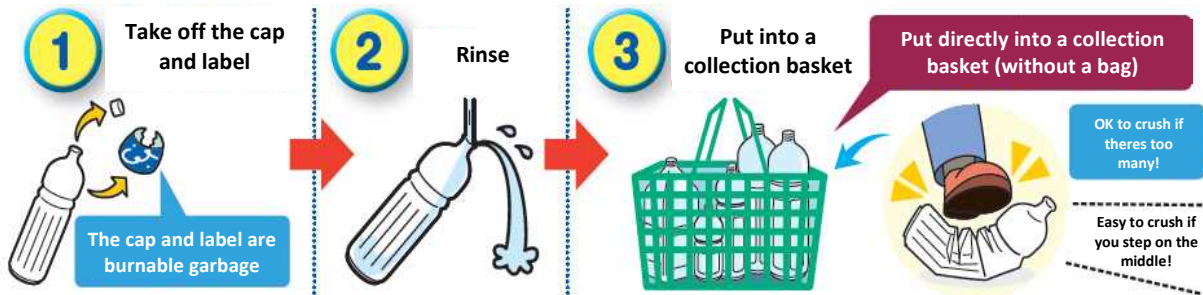
Alcohol



Sauce, dressing, etc.

### How to put PET bottles out

- Please prepare a basket for your household (with holes to avoid rain water).
- The basket can be made of any material (plastic, metal, etc.).



You can also return bottles at collection boxes (outside some supermarkets, stores, and public facilities)



### Bottles that cannot be collected

- Bottles without the PET bottle recycle mark
- Bottles that haven't been cleaned
- Bottles with liquid left inside

Even if a bottle is made of PET plastic, it may not be recyclable and is considered as "other plastic" so does not have a PET bottle recycle mark.



Eye drops



Soap, cosmetics



Cooking oil, oil-based sauces



Recycle Mark PET bottles without this recycle mark cannot be collected.

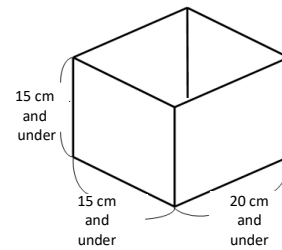
## Empty Cans (aki kan) (2 times every month)

\* Put out garbage before **9:00 a.m.**

### ● Empty cans that can be recycled

Cans with width/depth 15 cm and under, length 20 cm and under

### Example items



### How to put empty cans out

- Please rinse cans and make sure they are empty (if there is anything left inside, it cannot be collected).
- Put cans directly into a collection basket (without a bag).
- Please prepare a basket for your household (with holes to avoid rain water).  
The basket can be made of any material (plastic, metal, etc.).

Put directly into a collection basket (without a bag)



### Cans that cannot be collected

- Cans with width/depth over 15 cm, length over 20 cm cannot be collected (please put these out as unburnable garbage).
- \* If you put out a can larger than this and it goes on the processing line, it can break the machine.
- Cans that are not for food/drink are unburnable garbage.
- Gas cartridges/spray cans are dangerous garbage.



## Empty Glass Bottles (aki bin) (2 times every month)

\* Put out garbage before **9:00 a.m.**

### ● Empty glass bottles that can be recycled

Glass bottles for food/drink

### Example items



### How to put glass bottles out

- Please rinse the bottles and make sure they are empty (if there is anything left inside, it cannot be collected).
- Put bottles directly into the collection basket (without a bag).
- Please prepare a basket for your household (with holes to avoid rain water).  
The basket can be made of any material (plastic, metal, etc.).

Put directly into a collection basket (without a bag)



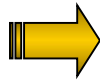
### Glass bottles that cannot be collected

- Glass bottles that are not for food/drink (e.g. medicine bottles), and also glass cups/other glass items are unburnable garbage.
- For returnable glass bottles (e.g. beer/sake bottles), please return them to where they were bought.



## Special Collection (application needed) (rinji gomi)

Apply for special collection if:



You have a lot more garbage than normal  
(from moving, cleaning, etc.).

You have items that are hard to process  
(see "Items Hard to Process" on page 10 for details).

You have garbage that is over the collection amount limit.  
Collection limit:

- Unburnable garbage (up to 2 bags per collection)
- Oversized garbage (up to 1 item per collection)
- Grass, leaves, branches, etc. (up to 10 lots per collection)

### How to apply

○ Please contact the Waste Management Division by phone or the website to apply.

To apply by phone TEL: 072-729-2371

To apply online URL: [https://logoform.jp/form/5CLo/minoh\\_seibi\\_rinjigomi](https://logoform.jp/form/5CLo/minoh_seibi_rinjigomi)

(Japanese only)

- Reception: Monday - Friday 8:45 a.m. - 5:15 p.m. (closed during the New Year period)
- Please apply at least 1 week before your preferred collection date  
(it may not be possible to schedule your preferred date depending on the season).
- You can choose morning or afternoon collection (you cannot choose the exact time).
- Large amounts may need to be separated into multiple collections.

QR code to apply for special collection online:



(Japanese only)

### Special Collection Fee

Fee: ¥2,520 each cubic meter

- \* Special collection costs ¥3,340 each for spring mattresses (special hard to process item).
- On collection, please give the fee to the collection worker.
- You do not need any oversized garbage tickets/Minoh City designated garbage bags.



### On collection day

- You must be present at collection (or someone to be your representative).
- Please bring the garbage to your normal garbage collection area, or a place where a 2-ton truck can access.
- \* Collection workers cannot enter your house
- You do not need any designated garbage bags/tickets  
(please note that even if you use them/stick them on, they cannot be used to pay for collection).

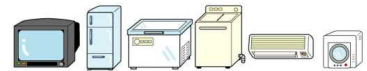
### If you cannot be present at collection, or it is difficult to carry out of the house

- Please contact a licensed private company to request collection, pricing and other details.

1	Kinki Seibi	4-3-44 Hanjo, Minoh City	TEL: 072-723-3226
2	Koushin Shouji	2-5-13 Ishimaru, Minoh City	TEL: 072-729-8755
3	Shrou Life	2-8-32 Ishimaru, Minoh City	TEL: 072-729-1011
4	Masuda Esei	1-1-10-201 Nishijuku, Minoh City	TEL: 072-728-3980
Association of licensed companies		Minoh City Environmental Services Limited Liability Partnership	TEL: 072-728-0477 Monday - Friday 10:00 a.m. - 4:00 p.m. (closed during the New Year period, public holidays)



## Items under the Act on Recycling of Specified Home Appliances



Air conditioners, TVs (CRT, LCD, Plasma), refrigerators/freezers, washing machines, dryers

\* For the recycling fees of each maker, please contact the Home Appliance Recycling Manifest Center  
Home Appliance Recycling Manifest Center (TEL: 0120-319640) <https://www.rkc.aeha.or.jp/> (Japanese, English)

How to throw items out

Choose from the 5 methods below:

### ① If you know the shop where the item was bought and/or want to replace it

- Ask the shop (where the item was bought/where you want to buy a new item) to take it for you
  - You must pay recycling and collection/transportation fees. Please contact the shop for details.

### ② Take the item by yourself to a "Designated Collection Point" \*only need to pay a recycling fee

#### Step 1

Ask for an "Appliance Recycle Ticket" from a post office, fill it out, and pay the recycling fee.  
\* The price differs depending on the maker, screen size, capacity, etc.  
\* Please check the maker name and specifications (screen size, capacity, etc.) before you go.



#### Step 2

Take the item to a "Designated Collection Point" below with your "Appliance Recycle Ticket" (as of 1 March 2024).  
• Osaka Senko Takatsuki Center Pick-up Area TEL: 072-677-5717  
• Nippon Express Toyonaka Center Pick-up Area TEL: 06-6862-1423  
• Nippon Express Settsu Center Pick-up Area TEL: 06-6349-0202

### ③ Contact a licensed collection company listed below (must pay extra recycling and collection fees)

1	Kinki Seibi	4-3-44 Hanjo, Minoh City	TEL: 072-723-3226
2	Koushin Shouji	2-5-13 Ishimaru, Minoh City	TEL: 072-729-8755
3	Shuro Life	2-8-32 Ishimaru, Minoh City	TEL: 072-729-1011
4	Masuda Esei	1-1-10-201 Nishijuku, Minoh City	TEL: 072-728-3980
Association of licensed companies		Minoh City Environmental Services Limited Liability Partnership	TEL: 072-728-0477 Monday - Friday 10:00 a.m. - 4:00 p.m. (closed during the New Year period, public holidays)

\* You must pay recycling and collection/transportation fees. Please contact the collection company for details.

### ④ Apply for "Special Collection" through the City (must pay extra recycling and service fees)

#### Step 1

Ask for an "Appliance Recycle Ticket" from a post office, fill it out, and pay the recycling fee.  
\* The price differs depending on the maker, screen size, capacity, etc.  
\* Please check the maker name and specifications (screen size, capacity, etc.) before you go.



#### Step 2

Contact the City by phone to apply.  
\* Do not stick the "Appliance Recycle Ticket" to the item. Please give it to the workers.  
Contact the Waste Management Division (TEL: 072-729-2371) to apply.



#### Extra fees

¥3670 Air conditioners, TVs (CRT, LCD, Plasma), washing machines, dryers  
¥3670 Refrigerators/freezers (170 L and under)  
¥5240 Refrigerators/freezers (over 170 L)

### ⑤ Take the item to the Environmental Clean Center (must pay extra recycling and service fees)

#### Step 1

Ask for an "Appliance Recycle Ticket" from a post office, fill it out, and pay the recycling fee.  
\* The price differs depending on the maker, screen size, capacity, etc.  
\* Please check the maker name and specifications (screen size, capacity, etc.) before you go.



#### Step 2

Take the item by yourself to the Environmental Clean Center.  
\* You must make a reservation before.  
\* Do not stick the "Appliance Recycle Ticket" to the item. Please give it to the workers.



#### Extra fees

¥1,910 + heavy weight fee Air conditioners, TVs (CRT, LCD, Plasma), washing machines, dryers  
¥1,910 + heavy weight fee Refrigerators/freezers (170 L and under)  
¥2,770 + heavy weight fee Refrigerators/freezers (over 170 L)  
\* Heavy weight fee: ¥62.854 per 10 kg (rounded to the closest ¥10)

## Computers

### Computer types

- Desktops, laptops
- LCD/CRT monitors
- All-in-one computers with LCD/CRT screens



### How to return/recycle

- ① Contact the computer maker to apply for a collection
- ② Contact the PC3R Promotion Association to apply for collection
- ③ Contact ReNet Japan Recycle to apply for collection



#### Contact the computer maker to apply for a collection

Computers that are no longer used can be collected by the maker under the Act on the Promotion of Effective Utilization of Resources. Please apply via the makers' website.



#### Contact the PC3R Promotion Association to apply for collection

If a computer maker is no longer in business (or bankrupt, etc.), you can apply to the PC3R Promotion Association for collection. Please contact the below for details.

# PC3R

一般社団法人 パソコン3R推進協会  
〒101-0052 東京都千代田区神田小川町3丁目8番地 中北ビル7F  
TEL : 03-5282-7685

PC3R

search



Scan the QR code to check your computer makers' contact details.

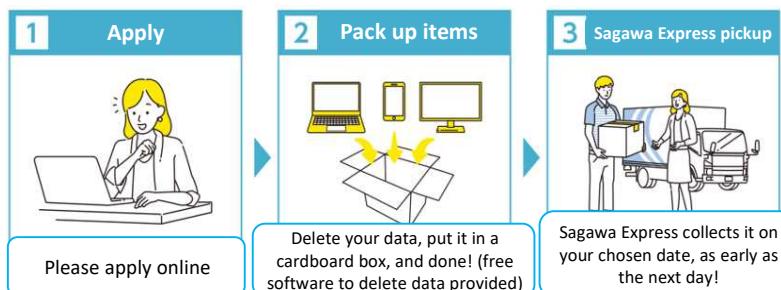
The website has detailed information about computer recycling available to the public.  
<https://www.pc3r.jp/>



#### Contact ReNet Japan Recycle to apply for collection

This service collects and recycle computers that are no longer used (and other small home electronics, etc.) via courier.

#### How to apply



Example of how to pack



Collection box size:  
**3 dimensions: 140 cm and under total**  
**Weight: 20 kg and under**


\* The first cardboard box is free to collect if the small electronics (computers) fit and it is the correct size. Please see the website below for details.

## ReNet Japan Recycle

URL: <https://www.renet.jp/>  
TEL: 0570-085-800 (10:00 a.m. - 5:00 p.m.)

ReNet Japan

search



## Items Hard to Process

Cannot be collected by regular collection because they are hard to process

Please apply for "Special Collection" for the following garbage.

\* You can also take these into the Environmental Clean Center (must make a reservation).

- Spring mattresses (special hard to process item)
  - ① To throw out via "Special Collection", you must pay ¥3,340 (per item)
  - ② If bringing it to the center, you must pay ¥2,080 + the heavy weight fee
- Vehicle parts (tires (and included wheel parts) are not allowed to be thrown out)
- Soil/sand, concrete blocks, bricks (up to 20 L each)
- Items longer than 3 m (must be able to carry by hand)

Spring mattresses



Car parts



Soil/sand, concrete blocks, bricks (up to 20 L each)



## Garbage not allowed (hazardous)

Cannot be collected by the City

These items are not allowed to be collected. The Environmental Clean Center cannot take them.

Reason	Items not allowed	How to throw out
Contains toxic materials	Poisonous and hazardous materials, agricultural chemicals (e.g. chemicals that kill pests), etc.	Contact the store it was bought from, or the distributor/maker.
Explosive or dangerous	<ul style="list-style-type: none"> <li>• Containers that hold high-pressure gas (e.g. propane gas).</li> <li>• Dangerous items such as petroleum, kerosene, gasoline, etc.</li> </ul>	Contact the store it was bought from, or the distributor/maker.
Infectious materials	Medical items used at home that could cause infections, etc.	Contact the medical institution or pharmacy that prescribed the item.
(other) Items that badly impact the waste disposal system	<ul style="list-style-type: none"> <li>• Soil/sand, concrete blocks, bricks of more than 20 L</li> <li>• Motorbikes with engines</li> <li>• Tires (and included wheel parts)</li> <li>• Safes (except portable safes)</li> <li>• Pianos</li> <li>• Fire extinguishers</li> </ul>	Contact the store it was bought from, or the distributor/maker.

For details, please contact the Environmental Clean Center (TEL: 072-729-4280).

If you cannot request collection from the store/distributor/maker/etc., please contact a licensed collection company to collect your garbage.

1	Kinki Seibi	4-3-44 Hanjo, Minoh City	TEL: 072-723-3226
2	Koushin Shouji	2-5-13 Ishimaru, Minoh City	TEL: 072-729-8755
3	Shurou Life	2-8-32 Ishimaru, Minoh City	TEL: 072-729-1011
4	Masuda Esei	1-1-10-201 Nishijuku, Minoh City	TEL: 072-728-3980
Association of licensed companies		Minoh City Environmental Services Limited Liability Partnership	TEL: 072-728-0477 Monday - Friday 10:00 a.m. - 4:00 p.m. (closed during the New Year period, public holidays)

## Garbage not allowed (by law)

Cannot be collected by the City by law (e.g. Waste Management and Public Cleansing Act)

- Garbage made outside of Minoh City
- Industrial waste (law-restricted waste produced by industries)



## Animal Death

The Environmental Clean Center cremates animals separately from garbage.

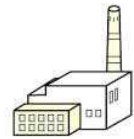


### ● When pets pass away

- (1) For collection, please call the Waste Management Division (TEL: 072-729-2371) to apply.
    - Application: Monday - Friday 8:45 a.m. - 5:15 p.m. (closed during the New Year period)
    - General cremation fee: ¥2,100 per animal
    - Individual cremation fee: ¥9,520 per animal
  - (2) You can go directly to the Environmental Clean Center (TEL: 072-729-4280) (no reservation needed).
    - Open: Monday - Saturday 9:00 a.m. - 12:00 a.m. 1:00 p.m. - 5:00 p.m. (closed during the New Year period)
    - General cremation fee: ¥990 per animal + heavy weight fee
    - Individual cremation fee: ¥8,410 per animal + heavy weight fee
      - \* Heavy weight fee: ¥62.854 per 10 kg (rounded to the closest ¥10)
- If you wish to have the animals' ashes returned, please tell the workers before cremation.

### ● If you find a dead stray dog, cat, etc.

- Please tell the Waste Management Division (TEL: 072-729-2371) where you found it.



## Taking Garbage into the Environmental Clean Center (only for general garbage produced within Minoh City)

### You must make a reservation before.

Reservations can be made using Minoh Kurashi Navi (smartphone app), the reservation website, or by phone. Please see the City website for details.



Reservation website for taking garbage in:  
<https://sodai-sys.jp/minoh/users/reservation/>

Fee for taking garbage into the Environmental Clean Center: **¥62.854 per 10 kg (including tax)**

- \* the fee is rounded to the closest ¥10
- \* spring mattresses cost ¥2,080 each + the above fees

### ● Taking in garbage

Monday - Saturday  
9:00 a.m. - 12:00 p.m. 1:00 p.m. - 5:00 p.m.  
(includes public holidays)  
\* cannot take garbage in on Sunday

### ● Inquiries

Monday - Saturday 8:45 a.m. - 5:15 p.m.  
(includes public holidays)  
\* Please note: Inquiries and taking in garbage have different open times and days.

Please:

- \* Bring proof of ID (identification)
- \* Say your reservation number to the workers
- \* Unload garbage yourself following the workers instructions
- \* Separate garbage per the requirements before your visit

Environmental Clean Center  
TEL: **072-729-4280**  
2898-1 Oaza-Aomadani, Minoh City

