

A huge earthquake could strike tomorrow!

Protect yourself from falling furniture

Protect yourself and your family from natural disasters

Survival Passport

Chapter 160

When a Nankai Megathrust Earthquake strikes, it is forecast that Minoh City will shake with an intensity level (shindo) of up to a lower 6. During lower 6 shaking, standing becomes difficult, tableware and appliances fall off shelves, and tall furniture falls over.

When at home, please rearrange the furniture in bedrooms because a lot of time is spent there, and the kitchen which is full of tableware and appliances. For furniture that is difficult to move, take necessary measures to make sure that it won't fall over, like attaching it to the wall with metal fittings.

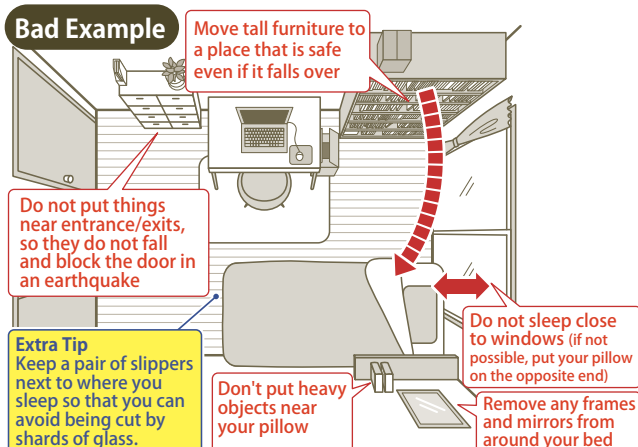
Right Now

Reconsider the layout of your furniture!

Be extra careful with your bedroom!

By simply changing the direction that you sleep in and keeping your bed away from tall furniture, you can avoid serious injuries. Please take this opportunity to review the placement of your furniture.

Bad Example



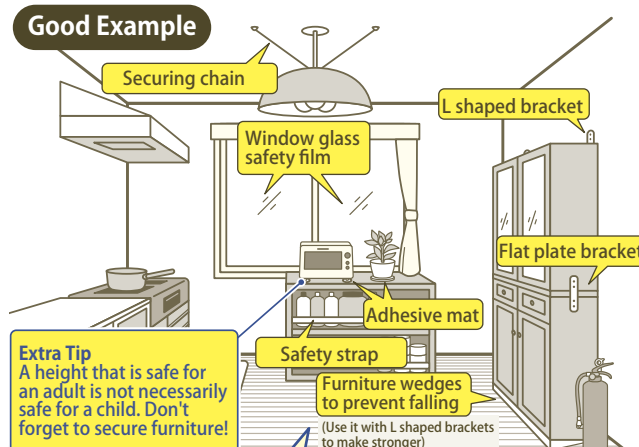
Right Now

Secure your furniture!

Every piece of furniture can be dangerous!

There is a risk of cupboard doors opening and tableware falling out, and microwave ovens sliding off benches. Make sure to prepare for this by securing your furniture in place with metal fittings, etc.

Good Example



When it is difficult to secure furniture by yourself...

Contact the

Senior Citizens' Employment Center!

TEL 072-723-8077

Ask for "securing furniture"(charges apply)!

Various types of fittings / You can get everything here!

Home Center Kohnan

Imamiya branch: Enter on the east side
Kayano branch: Bldg. No. 2 Aisle 56
TEL (both) : 050-3146-5776 (call center)

Ayahadio

Saito branch: Aisle 55B
TEL: 072-749-5201 (900m south of Saitonishi Station)

Minoh City has a disaster preparation agreement with Kohnan (Ltd) and Ayahadio (Ltd) Saito branch.

Currently FREE

People whose house was built before May 1981...

there is a great danger of your house collapsing!

Please get an earthquake resistance check right away!

Many wooden houses built before May 1981 do not have enough earthquake resistance, so they might collapse in a large earthquake. If you live in a house that was built before 1981, please get it checked for free right away!

There are also subsidies for improving the design and repairs!

For more information, please contact the Inspection and Guidance Division (TEL: 072-724-6866)