

The Earthquake Early Warning System!

When it starts, what should you do?

Protect yourself and your family from natural disasters

Survival Passport

Chapter 159

If the earthquake early warning sounds

Protecting yourself is the most important!

Please remember to take these steps

Hide under a desk or table

Protect yourself by hiding under a strong desk or table in a place where things won't fall or collapse. Hold onto the legs tightly and prepare for strong shaking.



Hiding after the shaking starts is too late!



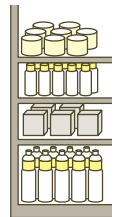
As it starts to shake, large furniture and appliances can move and fall over!

When you aren't close to a desk or table

When inside

Use what is around to protect your head

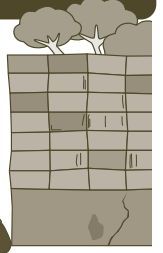
You can use what is around you (e.g. a pillow, bag, shopping basket, etc.) to protect your head. If there is nothing nearby, protect your head with your clothes or hands. Move to an area where things won't collapse or fall on you, and curl up.



When outside

Move away from dangerous areas

Move away from dangerous areas (e.g. concrete walls, vending machines, old buildings, etc.). Watch out for falling objects (e.g. glass, signs, roof tiles, etc.). Protect your head with your bag and move to a wide open area.



The Osaka 8.8 Million Drill is on 3 September! (Tuesday)

Osaka Prefecture sends instant emergency warning alerts to the phones of everyone inside the prefecture as a practice drill. Use this chance to react as if there was a real earthquake, and think about what you would do.

On 3 September (Tuesday) at 3:03 p.m., a practice drill (Major Tsunami Alert) is sent by the prefecture. At 3:05 p.m., a practice drill is sent by the city.

Useful info! Evacuation centers open in these situations

When an earthquake strikes or there is a risk of landslides/floods caused by typhoons, evacuation centers will open. They can protect people from disasters before they strike, and are a place for affected people to stay and a base for disaster support (e.g. distributed supplies).

Earthquake of intensity level (shindo) lower 5 or higher strikes

If an earthquake of intensity level (shindo) lower 5 or higher strikes the city, all Elementary School district evacuation centers will open.

Strong wind/flood damage evacuation information sent

Based on information from the Japan Meteorological Agency, the city will send out evacuation information ("Evacuation of the Elderly, Etc.", "Evacuation Instruction", etc.) and open evacuation centers.

※Evacuation centers may also open in other situations that are not listed above.

★Your evacuation center is the Elementary School in the district you live in (in the case of the Kita Elementary School District, it is Maple Hall. For the Kayano Kita Elementary School District, it is Dai Ni Junior High School.)

For City Evacuation Information, etc., check...

Tackey 816 (FM 81.6), the Citizen Safety Alert LINE/Email/X, the Minoh City Website emergency information, and the public address system speakers (located in parks, etc.). You can also check "Osaka Disaster Prevention Net" on the Osaka Prefecture Website (for evacuation information, etc.).