

# Right now! Rearrange and secure your furniture!

When a Nankai Megathrust Earthquake strikes, it is forecast that Minoh City will shake with an intensity level (shindo) of up to a lower 6. During an earthquake of that intensity, standing becomes difficult, tableware and appliances fall off shelves, and tall furniture falls over.

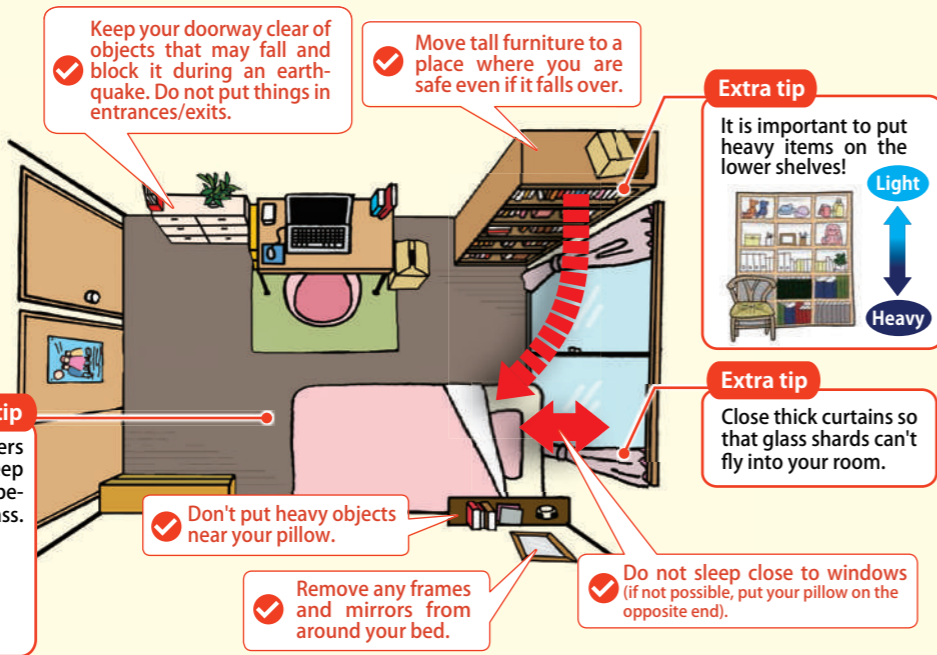
Please rearrange the furniture in **bedrooms** because a lot of time is spent there, and the **kitchen** which is full of **tableware and appliances**. For furniture that is difficult to move, take necessary measures to make sure that it won't fall over, like attaching it to the wall with metal fittings.

## 1 Reconsider the layout of your furniture!

Be extra careful with your bedroom

### Is your furniture placed like this?

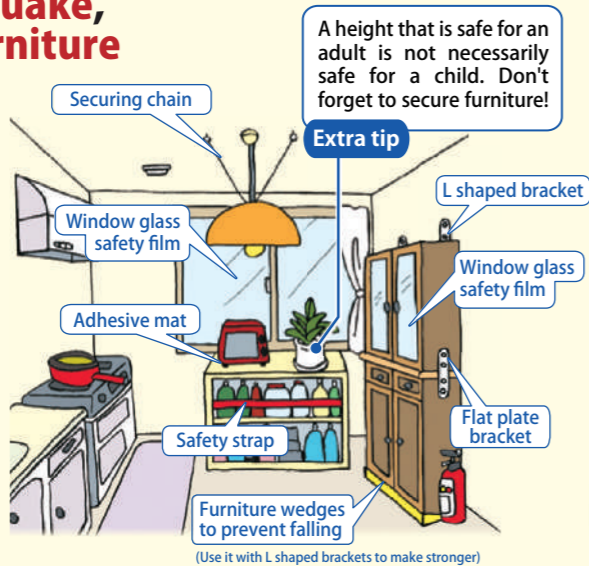
By simply changing the direction that you sleep in and keeping your bed away from tall furniture, you can avoid serious injuries. Please take this opportunity to review the placement of your furniture.



## 2 Secure your furniture!

### During an earthquake, every piece of furniture becomes deadly

During the Great Hanshin-Awaji Earthquake there were reports of cupboard doors opening and tableware falling out, microwave ovens sliding off benches and other incidents. Please make sure to secure your furniture and prevent it from falling over.



There are various types of fittings You can get them at home centers/general shops! You can get everything here!

- Kohnan Home Center**
  - Imamiya branch: Enter on the eastern side, TEL: 072-749-5011 (Intersection on National Road 171)
  - Kayano branch: Bldg. No. 2 Aisle 56, TEL: 072-726-5192 (next to Minoh City Hospital)
- Ayahadio**
  - Saito branch: Aisle 55B, TEL: 072-749-5201 (900m south from Saitonishi Station)

Minoh City has an agreement with Kohnan (LTD) and Ayahadio (LTD), that if a disaster strikes they will supply us with tools and material as well as helping to instruct citizens.

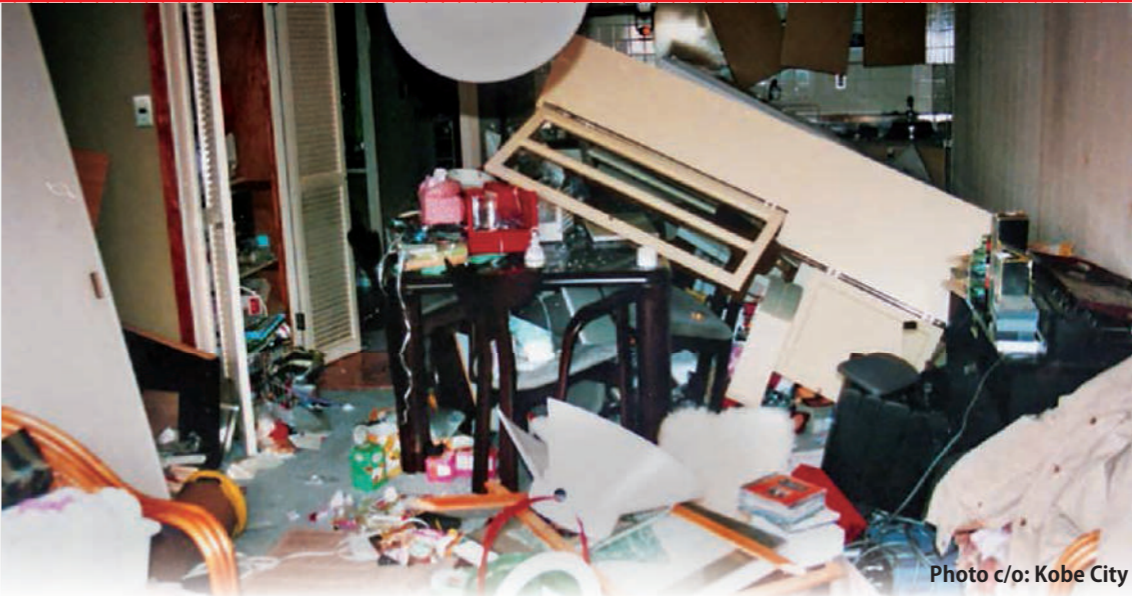
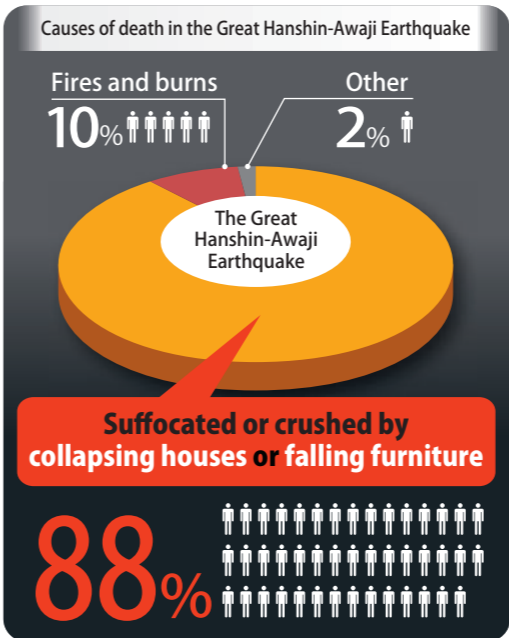


Photo c/o: Kobe City

## Preventative measures such as rearranging and securing your furniture could save your life!



More than 6,400 people lost their lives during the Great Hanshin-Awaji Earthquake. 88% of them were suffocated or crushed by collapsing houses or falling furniture. More than 40,000 people were injured, with around 70% of them being injured by furniture, electric appliances and glass shards.

In order to protect yourself during an earthquake it is crucial to rearrange your furniture and prevent it from falling down.

There is a 70% to 80% probability that a Nankai Megathrust Earthquake will occur during the next 30 years. It is forecast that in Minoh City it will be felt as an intensity level (shindo) lower 6 at most. It could even happen tomorrow, please take preventative measures now!

# Survival Passport

Chapter 136

A huge earthquake could strike tomorrow! Protect yourself from falling furniture!

## People whose house was built before May 1981... there is a great danger of your house collapsing!

Please get the earthquake resistance of your house checked for free right away!

Many wooden houses built before May 1981 do not have enough earthquake resistance, so they might collapse in a large earthquake. If you live in a house that was built before 1981, please get it checked for free right away!

Currently 0 yen! with a subsidy from the City Office	Which houses can get it	Wooden houses built before 31 May 1981 in Minoh City that had building certification
	Who can apply	Owner of the house or someone who will become the owner

\* For whoever is living in, or plans on living in one of these houses (excludes houses that will not be used from now)  
\* Excluding houses that have already received subsidies related to earthquake resistance

\* Houses being rented out will need to be applied for by the landlord  
\* People who live outside of Minoh City but own property within Minoh City can apply



After the earthquake resistance check There are also subsidies for improving the design and repairs! For more information, please contact the Inspection and Guidance Division (TEL: 072-724-6866)

If it is difficult to rearrange/secure furniture yourself...

Contact us!

Call the Senior Citizens' Employment Center! Ask for "rearranging/securing furniture" (charges apply)!

Senior Citizens' Employment Center TEL: 072-723-8077 FAX: 072-721-5315