

# Be Fully Prepared for a Typhoon!

In 2018, a series of typhoons and heavy rain caused **landslides and power/water outages** in areas of Minoh City.

In late June 2018, the record-heavy rain (the Heavy Rains of July 2018) caused damage in Minoh City; such as roads blocked by landslides, and large area floods due to overflowing gutters. In September, the exceptionally strong Typhoon No. 21 (Typhoon Jebi) hit Minoh. The strong wind caused trees and telephone poles to fall over and widespread power outages. In some apartment buildings, power outages meant that the buildings' water pumps stopped working, causing water outages too.

No one can tell when typhoons or heavy rain like this will hit again. **They can come one after the other, especially between August and October.** To protect yourself from danger, you must get ready; not sometime soon, but now. Please use the following points to prepare yourself for a typhoon as soon as possible.



Near the Kamitoromi Nakatani Bridge

Aogei 5 cho-me

## Is your household ready?

**The most Essential!** Please prepare 3 days of water and food supplies!

Be sure to have water and long-life food saved up so you do not need to go shopping during heavy rain. In the case of a large earthquake, water and food supplies are essential. After a large earthquake, help won't arrive from outside for 3 days, so prepare 3 days worth of supplies.

**Water** 9 liters x No. of people per household

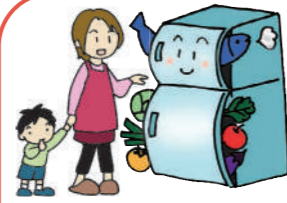
Each person needs 3 liters of drinking water per day  
(4 person household = 9 liters x 4 people)



**Food Supply** It's OK to use what you eat every day!

Please store food that you can eat without cooking

- Retort pouches (okayu, zosui, stew, etc.)
- Canned, bottled food



**Always keep your fridge and pantry full!**

Buy lots of groceries, eat the oldest produce first, and buy more as soon as you use them. Always keep a "new stock pile" in your house.

**Have you got it ready yet? Your emergency bag**

Prepare a backpack filled with things that you would need in a power/water outage, or if you need to evacuate quickly. Place the bag near the entrance of your home.

- Batteries
- Flashlight
- Portable battery charger and cellphone charging cable
- Wet wipe tissues
- Whistle (to call for help)



You can find everything at ¥100 shops and home improvement centers!

- Things you might need
  - Some water and snacks
  - Baby milk powder, diapers
  - Your regular medicine
  - Contact lens (or spare glasses)
  - Menstrual products
  - Masks
  - Tissues
  - Thermometer
  - Alcohol-based sanitizer



A backpack is best because it leaves your hands free!

**When heavy rain continues...** In heavy rain, typhoons, and other disasters, **Tackey 816** repeatedly broadcasts emergency information!

**Sign up now!**

**Citizen Safety Alert LINE**  
@minohcity (Japanese only)  
Registration QR code

**Citizen Safety Alert Email**  
(English, Japanese)  
Registration QR code

**Citizen Safety Alert Twitter**  
@Minoh\_Anzen (Japanese only)  
Registration QR code

**Easy way to use the Citizen Safety Alert Email**

You can choose which type of safety alerts you receive.

- Evacuation alerts for typhoons, heavy rain, etc.
- Alerts on scams, suspicious behavior
- Lightning strike alerts
- English version of the Citizen Safety Alert Email

(An English version is available! Check this box to receive it.)

If you have not registered yet, please do so. If you have registered, we apologize but ask that you please cancel and re-register to change which alerts you receive.

If a serious disaster that may harm citizens occurs, Minoh City will set up a Disaster Response Headquarters, where urgent information will be broadcast through Tackey 816 (FM 81.6). Please always bring a portable radio with you in times of disaster. Some smartphones may be able to tune in.

※ Information is broadcast periodically in English.

**For City Evacuation Information, etc., check...**

**Tackey 816 (FM 81.6)**, the Citizen Safety Alert LINE/Email/Twitter, the Minoh City Website emergency information, and the public address system speakers (located in parks, etc.).

The public address system speakers are one way to communicate information in a disaster. You cannot hear them inside buildings, and may be unable to hear them depending on your situation (e.g. in strong wind or rain), so please tune into **Tackey 816 (FM 81.6)**.

**Check information from Minoh City (Evacuation Information) and what you should do to evacuate!**

If you live in an "evacuate to an evacuation center" action hazard zone, please check the information from Minoh City (Evacuation Information) and when to evacuate to a center (right table).

For details, please check the Hazard Zone Map or call the Civil Defence Division on 072-724-6750.

House Area	Alert Level 3 (risk of disaster)	Alert Level 4 (high risk of disaster)	Alert Level 5 (disaster has/will happen)
	Evacuation of the Elderly etc.	Evacuation Instruction	Emergency Measures
<b>Red Zone</b> Danger Level 3 High Risk Area (1 floor) Danger Level 2 (1 floor)	The Elderly etc. to evacuate from dangerous areas Elderly people, people with disabilities (and helpers), those with young children etc. should go to evacuation centers. Those who can follow standard evacuation procedures should begin to prepare for evacuation.	Everyone to evacuate from dangerous areas Go to an evacuation center immediately.	Lives are in danger! Ensure safety immediately If it is too dangerous to evacuate to an evacuation center; move to a higher place, a strong building nearby, and take any other urgent measures to ensure safety.
<b>High Risk Area (2+ floors)</b> Danger Level 2 (2+ floors) Yellow Zone Danger Level 1	Please stay inside your house and do not go outside.	Take safety inside your house by going into a room away from mountains/cliffs (if in a 2+ floor building, go to the 2nd+ floor).	
<b>Outside the hazard zones</b>	Please stay inside your house and do not go outside.		

**Use these points to help you prepare for typhoons as soon as you can!**

**Are there leaves or garbage blocking the gutters around your house?**

Having leaves, branches, or garbage stuck in your gutter causes water to start to overflow. A block in one place causes the whole surrounding area to flood, so it will not only cause damage around your home, but your entire neighborhood.

Once the rain starts to fall it is already too late to do anything. Make sure to check the gutters around your house, and keep them free from leaves, branches, garbage, and anything else that might block them.



**"go to an evacuation center" or "stay inside your house"?**

**Check the Hazard Zone Map to know which is safer for your household!**

In a typhoon or heavy rain, outdoors in a hazard zone\* is the most dangerous place to be. If you live in a hazard zone and your house is safe, it is actually more dangerous to go outside during a storm.

Check the Hazard Zone Map that came with the July 2021 copy of Momiji Dayori, and see if it is safer for you to "go to an evacuation center" or "stay inside your house".

If you do not have the Hazard Zone Map, you can get it from the Citizen Registration Division (1F Minoh City Office Main Building), or from the Toyokawa/Todoromi branch. You can also view it on the Minoh City Website (access via QR code →)



\*A hazard zone is an area where there is a risk of landslides and/or floods.

**When a typhoon is coming...**

**Take action before the wind and rain get strong!**

**Bring inside things that could blow away in strong wind**

- Potted plants, hanging planters
- Clothespegs, laundry hangers
- Laundry poles
- Cleaning equipment (e.g. brooms)
- Bamboo screens, etc.



**Close window net screens/shutters and curtains early**

Before the wind and rain get strong, close the net screens/shutters on your windows and lock them. If your windows don't have these, close your curtains so that if the wind blows something into the window, they can protect you from any flying broken glass. Stick safety film to your windows for extra protection.

Make sure to check!  
The latest version was published June 2021

