

Right now! Rearrange and secure your furniture!

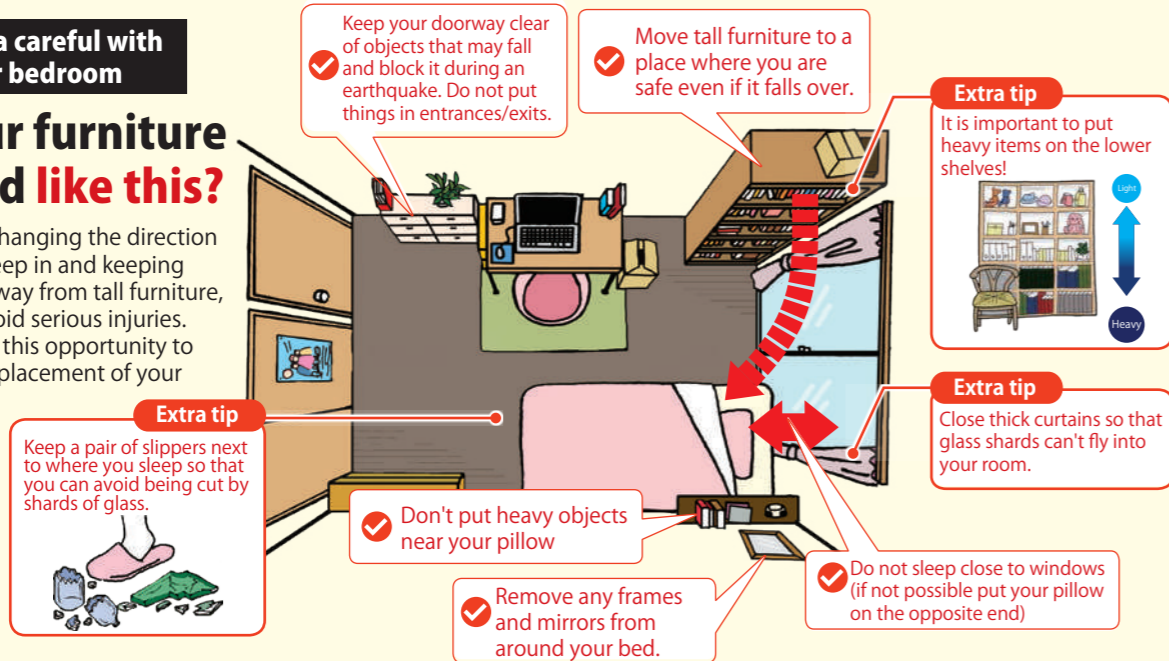
It is forecast that Minoh City will have an intensity level (shindo) of up to a lower 6 earthquake when the Nankai Megathrust Earthquake happens. During an earthquake of that intensity, standing becomes difficult, tableware and appliances fall off shelves and tall furniture falls over. Please rearrange the furniture in the bedrooms because a lot of time is spent there, and the kitchen which is full of tableware and appliances. For furniture that is difficult to move, take necessary measures to make sure that it won't fall over, like attaching it to the wall with metal fittings.

1 Reconsider the layout of your furniture!

Be extra careful with your bedroom

Is your furniture placed like this?

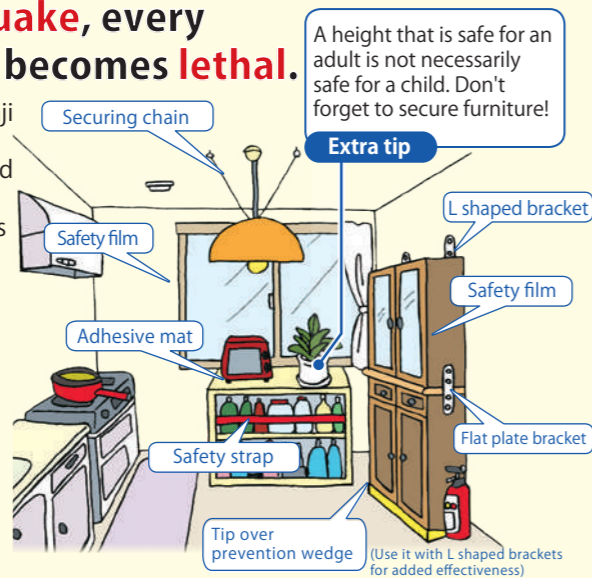
By simply changing the direction that you sleep in and keeping your bed away from tall furniture, you can avoid serious injuries. Please take this opportunity to review the placement of your furniture.



2 Secure your furniture!

During an earthquake, every piece of furniture becomes lethal.

During the Great Hanshin-Awaji Earthquake there were reports of cupboard doors opening and tableware falling out, microwave ovens sliding off benches and other incidents. Please make sure to secure your furniture and prevent it from falling over.



If it is difficult to secure furniture yourself... Contact us!

Call the Senior Citizens' Employment Center!
Ask for help with securing furniture!
(*charges apply)

Senior Citizens' Employment Center
TEL: 072-723-8077
FAX: 072-721-5315

There are various types of fittings

You can get them at home centers and general retailers!

You can get everything here!

Kohnan Home Center

● Imamiya branch
Enter on the eastern side
TEL 072-749-5011
(Intersection on National Road 171)

● Kayano branch
Bldg. No. 2 Aisle 56
TEL 072-726-5192 (next to the Minoh City Hospital)

Ayahidio

● Saito branch Aisle 55B
TEL 072-749-5201
(900m south from the Saitonishi Station)

Minoh City has an agreement with Kohnan (LTD) and Ayahadio (LTD), that if a disaster strikes they will supply us with tools and material as well as helping to instruct citizens.

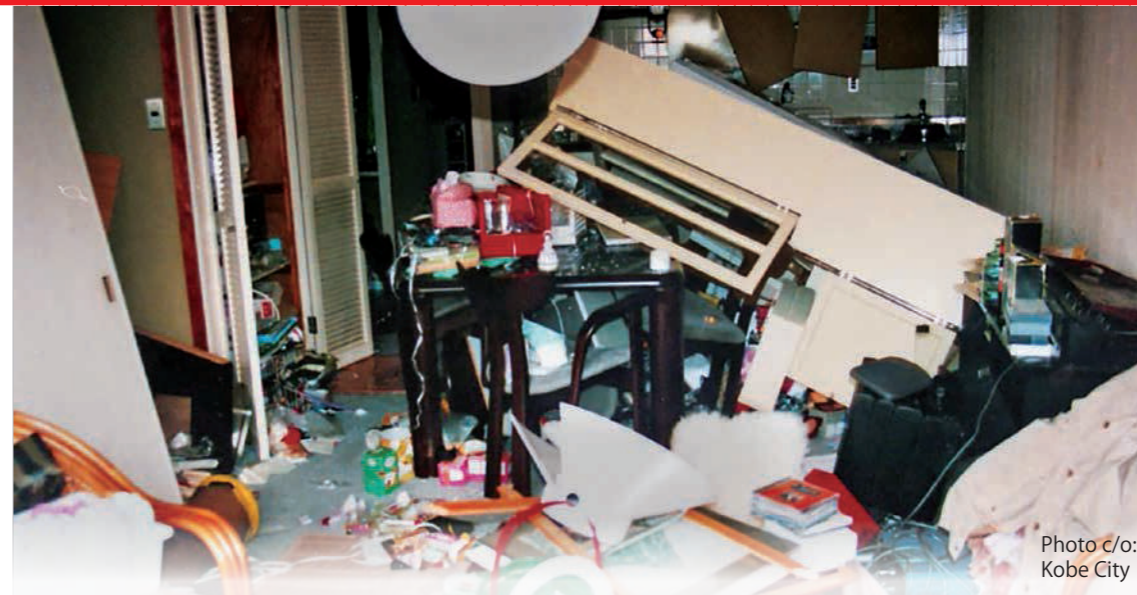
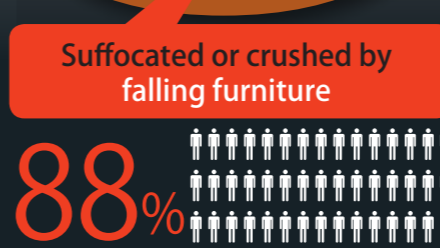


Photo c/o: Kobe City

Preventative measures such as rearranging and securing your furniture could save your life!

Causes of death in the Great Hanshin-Awaji Earthquake



More than 6,400 people lost their lives during the Great Hanshin-Awaji Earthquake. 88% of them were suffocated or crushed by falling furniture. More than 40,000 people were injured, with around 70% of them being injured by furniture, electric appliances and glass shards.

In order to protect yourself during an earthquake it is crucial to rearrange your furniture and prevent it from falling down.

There is a 70% to 80% probability that a Nankai Megathrust Earthquake will occur during the next 30 years. It is forecast that in Minoh City it will be felt as an intensity level (shindo) lower 6 at most. It could even happen tomorrow, please take preventative measures now!

People whose house was built before May 1981...there is a great danger of your house collapsing!

Please get the earthquake resistance of your house checked for free right away!

In the Great Hanshin-Awaji Earthquake a large number of houses that were not earthquake resistant enough that were built before 1981 collapsed and a large amount of people passed away. If you survive but your house collapses you will be faced with constrained living in an evacuation center or pre fab housing and face the economical burden of rebuilding. If you live in a house that was built before 1981, please get it checked for free right away!

Currently 0 yen!
with a subsidy from the City Office

Target houses

Wooden houses built before 31 May 1981 in Minoh City that had building certification.

*For whoever is living in, or plans on living in one of these houses (excludes houses that will not be used from now)
*Excluding houses that have already received subsidies related to earthquake resistance.

Application eligibility

Owner of the house or someone who will become the owner
*Houses being rented out will need to be applied for by the landlord
*People who live outside of Minoh City but own property within Minoh City can apply

After the earthquake resistance check

There are also subsidies for improving the design and repairs. For more information please contact the Inspection and Guidance Division 072-724-6866

Now you can get an earthquake resistance check for free!



Protect yourself from falling furniture!
A huge earthquake could strike tomorrow!

*Financial support for earthquake resistance checks is conditional on the council's vote